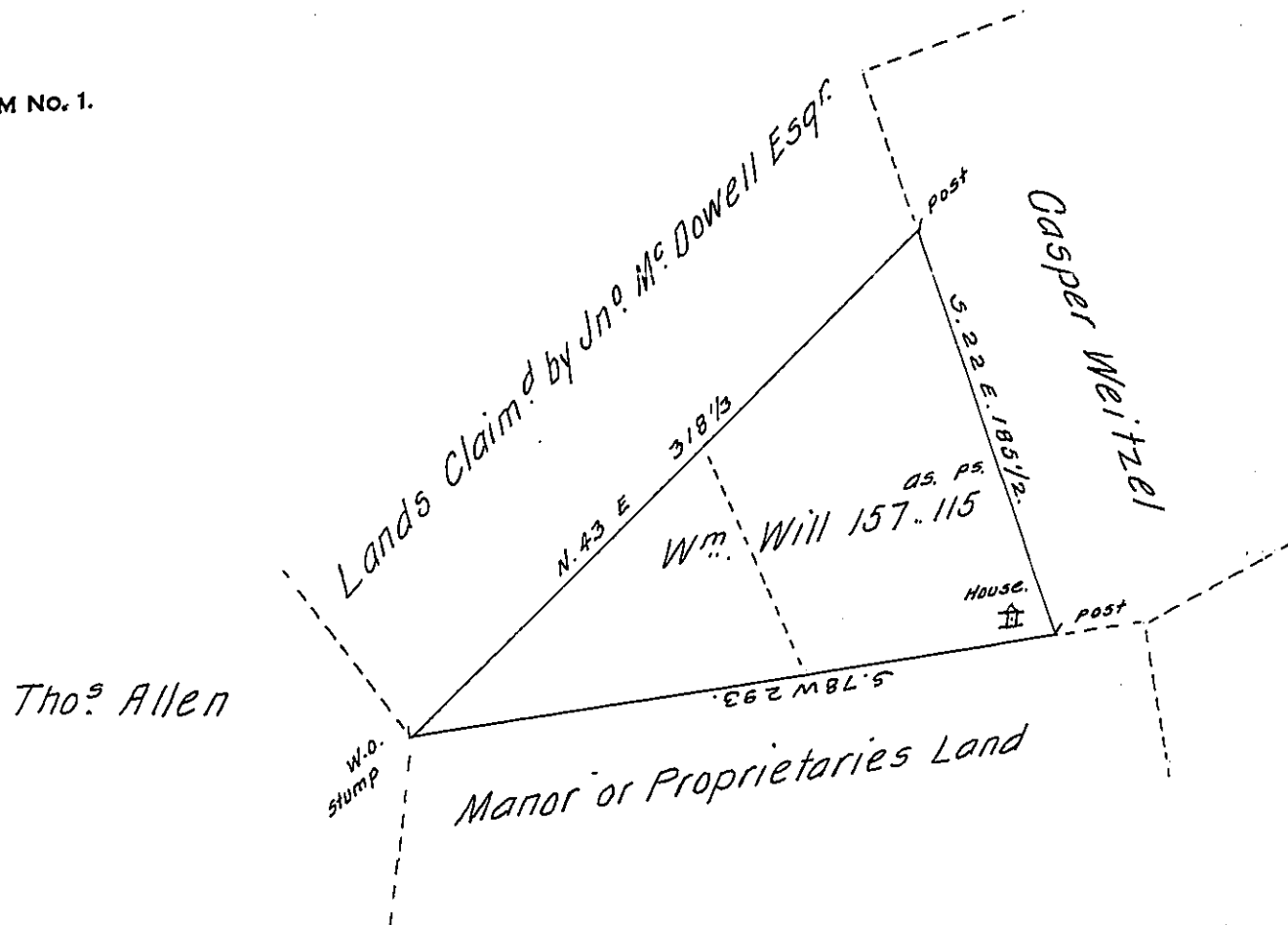


FORM No. 1.



*Draught of a tract of Land Situate in Kishecoquillis Valley Union Town-  
ship Mifflin County. Containing One hundred and Fifty seven Acres and  
115 perches and the allowance of Six p<sup>t</sup> Cent for Roads &c. Survey'd the  
25<sup>th</sup> of August 1806 - In pursuance of a Warrant Granted to William Will  
Dated the 15<sup>th</sup> day of March 1774.*

*Notes.*

*pr. William Harris D.S.*

*The above Tract of Land includes a Survey of 102<sup>a</sup>. 137<sup>p</sup> &c (Shewen to the East-  
ward of a Dotted line thro the above Draught) made for W<sup>m</sup>. Fleming Nov<sup>r</sup> 20<sup>th</sup>  
1794 - In pursuance of his Warrant Dated the 21<sup>st</sup> day of May 1794. - Also a  
Survey <sup>of 54<sup>a</sup>. 138<sup>p</sup> &c</sup> shewn to the Westward of Said Dotted line) made May 26<sup>th</sup> 1797 &  
May 5<sup>th</sup> 1801. In pursuance of An Application in the name of Mich<sup>l</sup> Knight  
dated the 24<sup>th</sup> day of Nov<sup>r</sup> 1766. N<sup>o</sup> 1952.*

*George Swartzel Claims the whole of the above Tract of Land by Virtue  
of his Improvements Consisting of a Dwelling house with about 20. Acres  
of Clear'd Land and a Warrant Dated the 3<sup>d</sup> day of June 1802. who appears in  
Possesion of Said Tract at this time.*

*To Samuel Cochran Esquire } pr. William Harris D.S.  
Surv<sup>r</sup> Gen<sup>l</sup> of Pennsylvania }*

*IN TESTIMONY that the above is a copy of the original remaining on file in  
the Department of Internal Affairs of Pennsylvania, made  
comformably to an Act of Assembly approved the 16th day of  
February 1833, I have hereunto set my hand and caused  
the Seal of said Department to be affixed at Harrisburg,  
this eighth day of October 1907.*

*Henry Horvath*  
Secretary of Internal Affairs.